



# UniFi® | SWITCH 16 XG

10G 16-Port Managed Aggregation Switch

Model: US-16-XG

Non-Blocking Throughput Switching

Maximum Performance and Low Latency

10G Ethernet SFP+ and RJ45 Ports



## 10G Aggregation Switch for Enterprise Networks

Build and expand your network with Ubiquiti Networks® UniFi® Switch 16 XG, part of the UniFi Enterprise System. The US-16-XG is a fully managed, 16-port, 10G fiber switch that enhances network capacity by providing high-bandwidth aggregation connectivity to multiple switches in your network.

The US-16-XG offers an extensive suite of advanced Layer-2 switching features and protocols.

### Switching Performance

The US-16-XG offers the forwarding capacity to simultaneously process traffic on all ports at line rate without any packet loss.

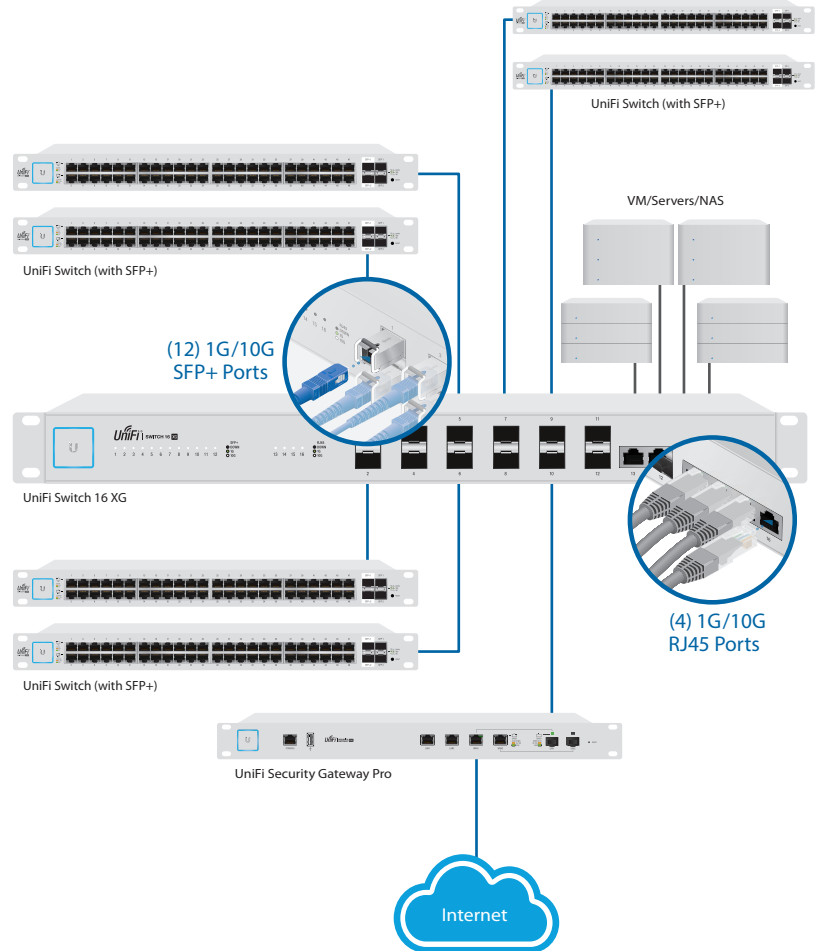
The total non-blocking throughput is up to 160 Gbps.

### 10G High-Capacity Links

The US-16-XG offers maximum performance and low latency as an aggregation switch.

For fiber connectivity, it features 12 SFP+ ports. For copper connectivity, the US-16-XG offers four RJ45 ports that support 10GBASE-T, the standard for 10 Gbps connections using Cat6 (or higher) cabling and RJ45 connectors.

## Deployment Example



The US-16-XG connects to the following:

- Multiple UniFi Switches and a 1G/10G router via SFP+ ports
- VM, Server, NAS, or other network devices via 1G/10G RJ45 ports



# UniFi Controller

Designed for convenient management, the UniFi Controller software allows admins to configure and monitor the UniFi Switch and other UniFi devices using a graphical user interface. You can download it from [www.ubnt.com](http://www.ubnt.com) at no cost.

## Multi-Site Management

A single instance of the UniFi Controller running in the cloud can manage multiple UniFi sites within a centralized interface. Each site is logically separated and has its own network monitoring, configuration, maps, statistics, and admin accounts.

## Switch Configuration

You can access any managed UniFi Switch through the UniFi Controller to configure a variety of features:

- Operation mode (switching, mirroring, or aggregate) per port
- Network/VLAN configuration
- Jumbo frame and flow control services
- Network settings
- Storm control setting per port
- Spanning tree configuration
- 802.1x control and RADIUS VLAN
- Debug terminal option for command-line interface

## Switch Port Status

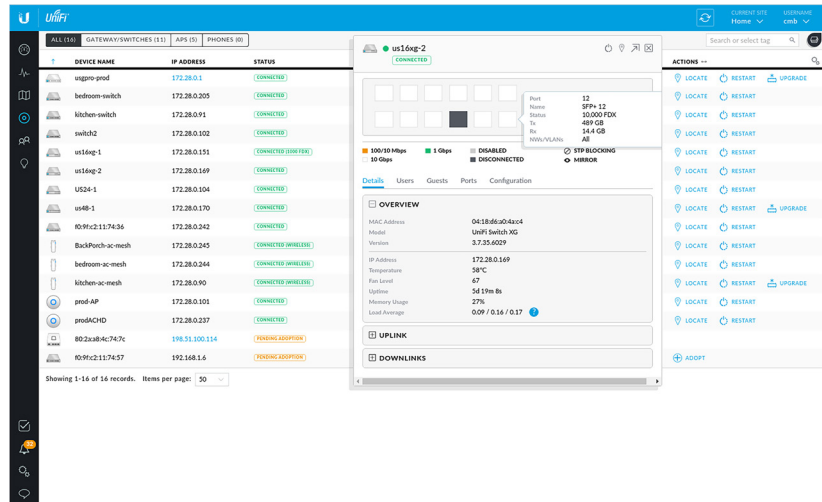
You can also view status information for each port:

- Connection speed and duplex mode
- TX/RX data rates
- Network/VLAN setting



## Dashboard

The *Dashboard* tab provides a visual representation of your network's status. Basic information is provided for each network segment.



## Device Configuration

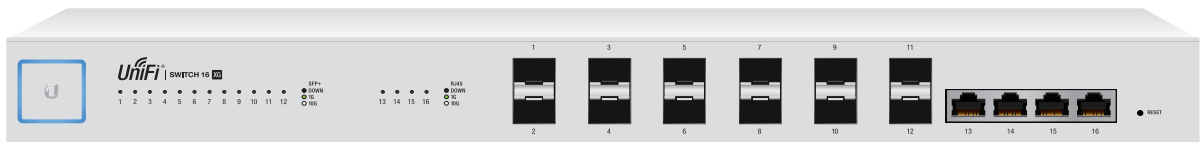
The *Devices* screen displays the UniFi devices discovered by the UniFi Controller. You can access each managed device for device details and configuration.

# Models

## UniFi Switch 16 XG

Model: US-16-XG

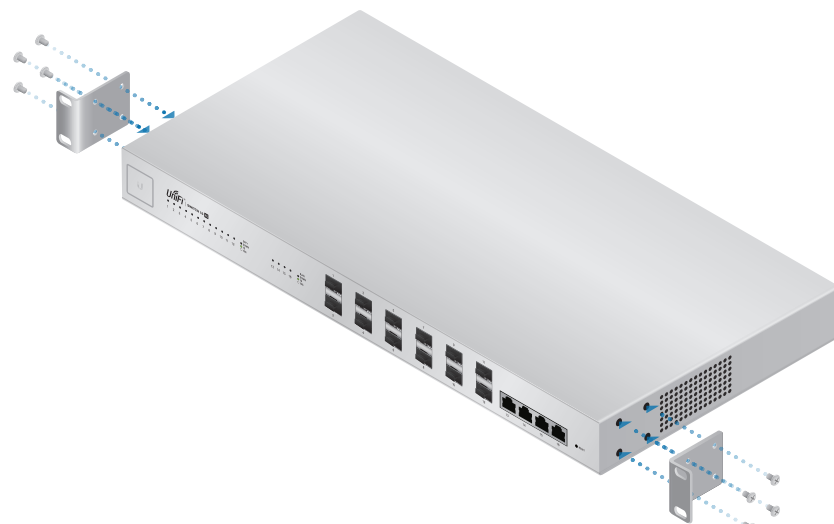
- (12) 1G/10G SFP+ Ports
- (4) 1G/10G RJ45 Ports
- (1) RJ45 Serial Console Port
- Non-Blocking Throughput: 160 Gbps
- Switching Capacity: 320 Gbps
- Forwarding Rate: 238.10 Mpps
- Rack Mountable with Mount Brackets (Included)
- DC Input Option (Redundant or Stand-Alone)



Front Panel



Back Panel



Place on a desktop or attach the mounting brackets to install in a rack.

# Hardware Specifications

US-16-XG				
Dimensions	443 x 221 x 43 mm (17.44 x 8.70 x 1.69")			
Weight	Without Mount Brackets		With Mount Brackets	
	2.62 kg (5.78 lb)		2.71 kg (5.97 lb)	
Enclosure Characteristics	SGCC Steel			
Total Non-Blocking Throughput	160 Gbps			
Switching Capacity	320 Gbps			
Forwarding Rate	238.10 Mpps			
Max. DC Power Consumption	36W (Excludes SFP/SFP+ Modules)			
Power Method	AC		DC	
	100-240VAC/50-60 Hz, Universal Input		DC 56W, 25 to 16V, with 2.5 mm DC Power Inline Connector	
Supported Voltage Range	100 to 240VAC		25 to 16VDC	
Power Supply	AC/DC, Internal, 56W DC			
LEDs Per Data Port	Speed/Link/Activity			
Sound Level*	Fan Level 0	Fan Level 1	Fan Level 2	Fan Level 3
	1.0 dBr	10.7 dBr	12.2 dBr	12.8 dBr
Networking Interfaces	(12) 1/10 Gbps SFP+ Ethernet Ports (4) 1/10 Gbps RJ45 Ethernet Ports			
Management Interface	(1) RJ45 Serial Port Out-of-Band, Ethernet Ports In-Band			
Certifications	CE, FCC, IC			
Rack Mount	Yes, 1U High			
ESD/EMP Protection	Air: ± 24 kV, Contact: ± 24 kV			
Operating Temperature	-5 to 40° C (23 to 104° F)			
Operating Humidity	5 to 95% Noncondensing			
Shock and Vibration	ETSI300-019-1.4 Standard			

\* Background noise level: 27.5 dBA